

# LS20 Sheffield Fitting Instructions

You will require the help of an assistant to fit the Sheffield.

1. Offer up the Sheffield in approximately the required position on the back side of the railings.
2. From the front of the railings, thread the top bracket (A) through the holes in the Sheffield container (C).
3. From the inside of the Sheffield, place a rubber washer (D) followed by a metal washer (E) over each of the threaded studs then loosely secure with 2 of the nuts (F). Fig 1
4. Repeat with the bottom bracket but place the lower spacer bar (B) between the railings and the front of the Sheffield as shown in Fig 1
5. Finalise the position of the Sheffield then fully tighten the 4 securing nuts (F)

## Parts List

A	Qty	Description
A	2	Fixing brackets
B	1	Lower spacer bar
C	1	Sheffield container
D	4	Rubber washer
E	4	M8 washer
F	4	M8 Nut

Fig 1

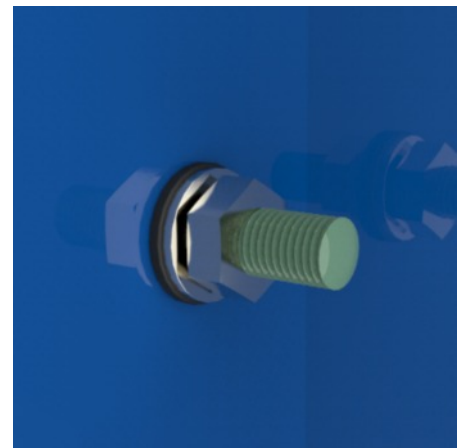


Fig 2

